

Our Faculties, Vocational Schools, and Institute

• 4 Bachelor's Degree Faculties

1. Faculty of Dentistry

Dentistry (English Program)
Dentistry (Turkish Program)

2. Faculty of Humanities and Social Sciences

Public Relations and Advertising
Business Management
Social Services
International Trade and Logistics
Political Science and Public Administration
Psychology (English Program)
Psychology (Turkish Program)

3. Faculty of Art and Design

Gastronomy and Culinary Arts

4. Faculty of Health Sciences

Nursing
Midwifery
Physiotherapy and Rehabilitation
Pediatric Development
Healthcare Management
Nutrition and Dietetics
Language and Speech Therapy

• 2 Associate's Degree Vocational Schools

1. Vocational School

School of Justice

2. Vocational School of Health Services

Anesthesia
Pediatric Development
Electroneurophysiology
Physiotherapy
First and Emergency Aid
Social Services
Medical Documentation and Secretariat
Medical Imaging Techniques
Oral and Dental Health
Operating Room Services

• 1 Graduate School

Clinical Psychology
Business Management
Healthcare Management
Occupational Health and safety

• An English Preparatory Program

Istanbul Kent University by Numbers

- 4 Faculties, 2 Vocational Schools, 1 Graduate School
- 17 Bachelor's Degree Programs, 11 Associate's Degree Programs, 4 Graduate Programs, and an English Preparatory Program
- 24 Student Clubs
- 3600 Students
- 130 Academicians
- A total of 22 Laboratories dedicated to Dentistry and Health Sciences.
- In addition; 1 Neuroscience Laboratory, 1 Culinary arts Laboratory, 1 Public Relations and Advertising Laboratory, and Computer Laboratories.
- 1 Lifelong Learning Center consisting of 10 Academies
- 1 Career and Development Center
- 1 Research and Development Center
- 1 Dentistry Application and Research Center
- 1 Oral and Dental Health Education, Application, and Research Center
- 1 Disability Studies Research and Application Center

Our Erasmus Policy in a Nutshell

We are always looking for partnerships with universities that have compatible program outcomes as ours. Student mobility is our primary target for two main reasons; to make sure our students have every opportunity to enhance themselves as high-skilled, global professionals with inter-cultural capabilities, and to be able to contribute to the high-skilled employment demands, scientific innovations, and entrepreneurship of our beloved country and world. Teaching staff mobility is highly regarded for its international research and networking opportunities. Administrative staff mobility is encouraged greatly as well, in favor of the professional, and inter-cultural progress of our staff. We, as a university, continuously work hard to achieve and maintain the highest standards in higher education, and to be a valuable partner for our collaborators.



Why Come to Istanbul?

- Istanbul is one city with two continents; it represents both Europe and Asia.
- Istanbul is one of the most ancient and one of the most modern cities of the world at the same time, and it is truly unique.
- Istanbul is home for many civilizations, and is immensely rich with multiple cultures.
- Istanbul is one of the fastest growing modern cities of the world in terms of; Education, Business, Finance, Technology, Healthcare, Fashion, Music, Culinary Arts, Entertainment, and much more. In that sense, Istanbul presents many opportunities of networking and business connections.
- Istanbul is surrounded with a beautiful nature, and is accompanied with its marvelous Bosphorus; which is not just a good sight or leisure opportunity, but a means of the daily life.
- Istanbul has a rich cultural life with continuous concerts and music festivals, theatres, art exhibitions, film festivals, and more; supported by a vivid entertainment industry, and some of the best culinary experiences of the world.
- Istanbul is a city that embraces and values all cultures and beliefs. Istanbul is a city that values diversity.



Why come to Istanbul Kent University?

- Because in Istanbul Kent University, you do not just have the opportunity to receive a high-quality education with the latest technology and some of the best academicians in the world, all experts in their related fields; but you also get to receive that education right at the very center of the amazing Istanbul, with instant access to all that the city offers.



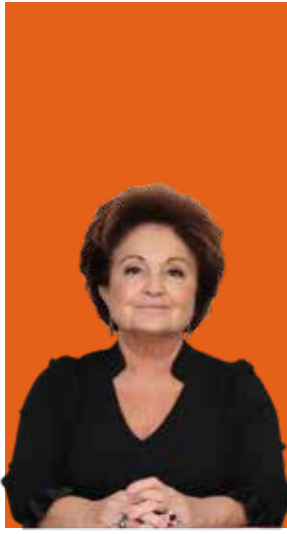


A Brief Message from the Rector

To be an inventor and to present your invention to the service of humanity, is quite a rewarding and joyful sentiment. German polymath, man of letters, politician, painter and scientist, Wolfgang Van Goethe says "Invention, is the end result that seekers attain." From this point of view, my humble advice to you is; do not give up researching, learning and wondering for all your life. Do not stray from the path of truth and science.

As Istanbul Kent University family; with modern classrooms and laboratories with technologic infrastructure that will serve all of your research throughout your academic life, the academic personnel formed by leading experts in their respected areas with a student-focused education approach, we are expecting to see you in our campus that combines history with technology and stands out with its urban architecture, which is located at the heart of Istanbul, Taksim. May science be with you,

Prof. M.D. M. Necmettin ATŞÜ
Rector of Istanbul Kent University



A Brief Message from the Chairwoman of the Board of Trustees

Our University was founded with the aims of; keeping up with the fast-pace and continuous progress of the modern world; serving the public on social, cultural, and educational areas; and to successfully take advantage of every opportunity of the modern world while embracing local values and cultures. We are honored to invest in the bright future of our country, and of the world. We are hoping to serve for the dreams and goals of our students and all humanity. I invite everyone who wants to be proud of every single detail of the work they are doing, and who wants to realize their happiest dreams, to come study at the Istanbul Kent University. My warmest regards,

Berna Yilmaz
Chairwoman of the Board of Trustees

www.kent.edu.tr



[/istanbulkentedu](https://www.instagram.com/istanbulkentedu)
erasmus@kent.edu.tr

